

George Town, Cayman Islands

Monthly Rent: CI\$2,600

Listing Type: Condo

Bathrooms: 1

Views: Garden View

Block: 20D

Furnished: Yes

Class: Existing

Type: Condominium / Apartment

Status: New

Pets Friendly: No

Parcel: 466H50

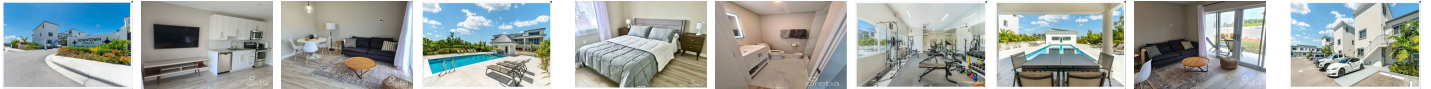
Number of Units: 52

Bedrooms: 1

Kids Friendly: No

Foundation: Slab

Construction: Block



PRESENTED BY



PHILLIP WOOD

Phone
345-623-1400

Email
phillip.wood@evrealestate.com

PROPERTY DESCRIPTION

AVAILABLE NOW MODERN LIVING IN PRIME LOCATION! Welcome to the gated community of Downtown Reach 402, a Chic and contemporary 1-bedroom apartment designed for modern living. Located just off the Linford Pierson Highway, this stunning unit is perfect for a single professional or a couple seeking both comfort and convenience. Step into a beautifully designed living space that effortlessly blends style and functionality. The open-concept layout offers a bright and inviting atmosphere, perfect for relaxation and entertaining. The cozy bedroom serves as a private retreat, while the sleek, well-equipped kitchen makes meal prep a breeze. Situated just minutes from George Town, top schools, restaurants, entertainment, and Camana Bay, this prime location ensures you're never far from the action. Whether you're dining out, shopping, or enjoying the nightlife, everything you need is right at your doorstep. Don't miss out on this incredible rental opportunity! Schedule a viewing today!