



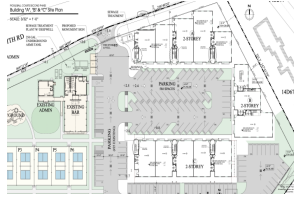
Pickleball Courts Second Phase

George Town, Cayman Islands

Monthly Rent: CI\$42
Listing Type: Commercial
Built: 2024
Views: Inland

Type: Commercial
Status: Current
Block: 14D

Parcel: 244



PRESENTED BY



JILL DAVISON
Phone
Email
jill@1503propertygroup.com

PROPERTY DESCRIPTION

Introducing our brand-new commercial units available for rent. Situated in a prime location next to the exciting new pickleball courts, these modern units offer a dynamic opportunity for businesses looking to thrive in a bustling area. Pricing is at \$42/ sq ft, plus \$3.35/sq ft CAM and separate utilities expenses. These commercial spaces feature contemporary design and versatile layouts, providing the perfect canvas for you to customize and create a space that suits your business needs. With ample foot traffic from pickleball enthusiasts and visitors to the courts, your business will benefit from high visibility and exposure in this vibrant community. Whether you're looking to establish a new retail outlet, office space, or service-oriented business, these commercial units offer an excellent combination of location, amenities, and potential for success. Don't miss out on this unique opportunity to be part of a growing, active community and take your business to new heights. Contact us today to learn more and secure your space next to the exciting new pickleball courts!